

# NEWTEC

the market leaders



NEWTEC A/S  
Stærmosøgårdsvej 18  
DK-5230 Odense M  
Denmark

T: +45 66 15 84 44  
F: +45 66 15 44 39

E: mail@newtec.dk  
www.newtec.com

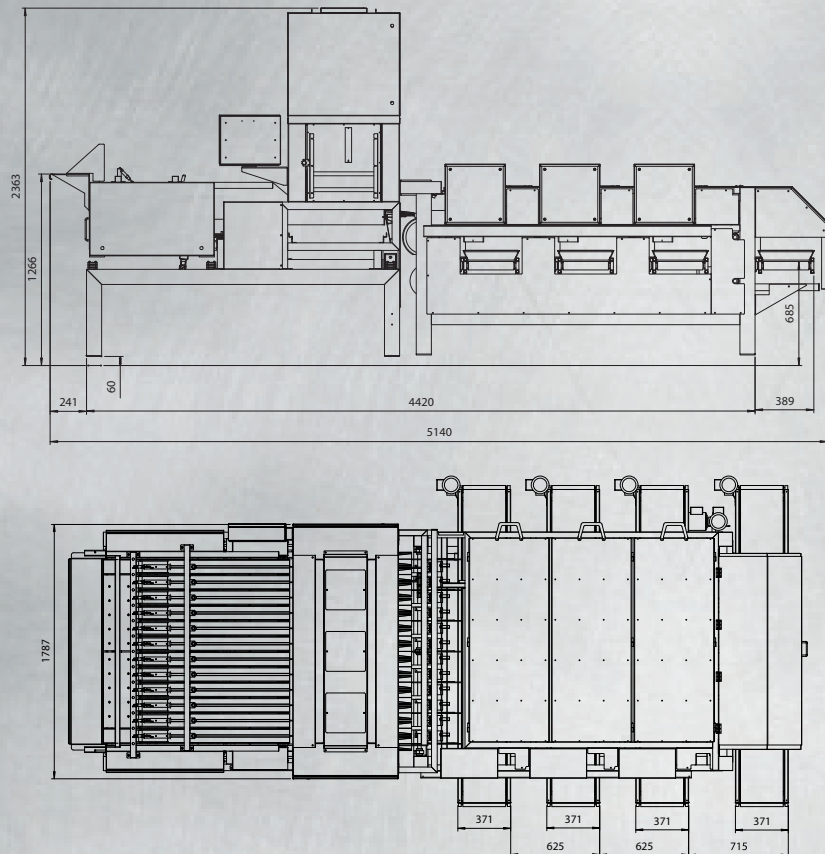
## CELOX RV12

- grades by both length/diameter/volume and quality
- robustly constructed in stainless steel, ensuring a reliable machine in the heart of the production
- ensures a consistent output quality, in accordance to individual demands – again ensuring optimization of raw materials
- very fast change over time and a user-friendly interface – using touch screen technology
- the CELOX RV12 has double the capacity of earlier models
- handles potatoes from 18 to 103mm diameter and from 20 to 200mm long  
reduces the consumption of raw materials by approx. 1.5% – adding direct value to the bottom line
- designed in stainless steel with completely sealed cabinets for easy cleaning and maintenance

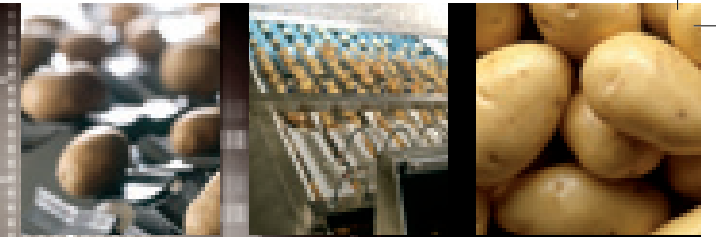
### Technical Data

Air requirement:  
Approx: 40 NL./min at 7 bar

Electrical requirement:  
3 x 380 or 3 x 230 V.  
15 A 3 KW



# CELOX RV12



# NEWTEC

the market leaders

speed  
accuracy  
quality  
reliability  
versatility

Future proof your grading with the best quality and size sorting machine on the market

Combined quality and size grading in one machine giving you complete flexibility and control.  
Maximizing the value of your product today and tomorrow.



INTERNET ENABLED

# individuality customization flexibility add value

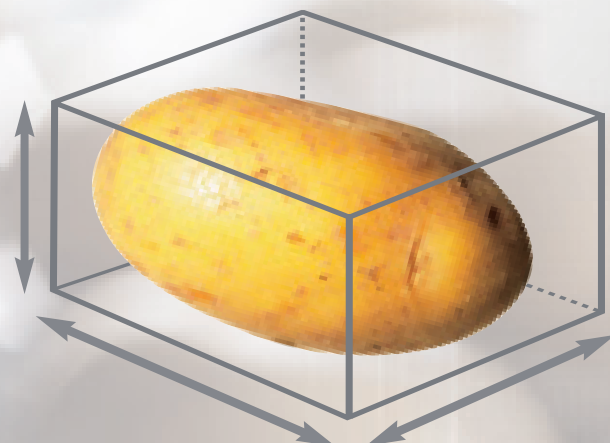
## Grading By Size

- Volume
- Diameter
- Length

## Capacity\*

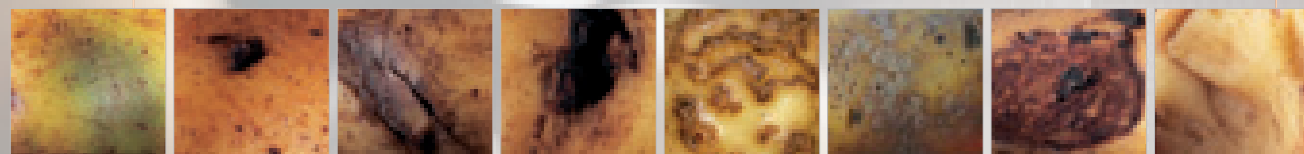
Potatoes of	30g:	~4,5 tonnes/hour
Potatoes of	80g:	~10 tonnes/hour
Potatoes of	300g:	~20 tonnes/hour

\* subject to trial with the customer's potatoes



## Grading By Quality

The revolutionary CELOX RV12 does not only grade by size. The CELOX RV12 also grades by quality which includes the following:



Green Black Spot Grey Damage Rot Scurf Silver Scurf Dry Cuts Fresh Damage

## CELOX RV12 Impacts On

- Labour cost
- Increased throughput
- Higher earnings per tonne
- Making customization a financial reality
- Production flexibility
- "On demand" production
- Extremely fast change over time
- High value per m<sup>2</sup> in the production area

## Add Value

On average the CELOX RV12 will reduce the consumption of raw materials by 1.5%.

Eg: Out of 1,000 tonnes, 15 tonnes of good potatoes will NOT be rejected, but graded as correct. With an average price of just 100 Euro per tonne this alone adds 1500 Euro per 1,000 tonnes to the bottom line.

## Internet enabled

Remote diagnostics uses the power of the Internet to capture a complete usage-profile of all moving components, ensuring high reliability and minimizing unforeseen downtime.

Supports "Web-Services" for capturing complete production statistics, improving the utilization of your raw material "meeting the sorting requirements of tomorrow".

# CELOX RV12

## The camera unit

All potatoes are rotated through a camera unit, while one of three cameras photographs each potato up to 40 times. The information obtained determines the exact length, diameter and surface condition of the potato. The data captured is then evaluated by high speed computer which decides how the potato will be graded – all in accordance with the chosen parameters entered into the touch screen interface.



## The infed section

This consists of 12 vibrating channel feeders, ensuring gentle and efficient separation of the potatoes.

## Complete Surface Coverage

The whole surface of each potato is exposed to the camera as it passes through the camera section.



## User-Friendly

Easy access to all functions is obtained through the Touch Screen. Touch and go...



## The Spinaflex Outlets

Upon exiting the camera section the potatoes are smoothly and gently placed on the Spinaflex unit. Once reaching the area above the specified outlet, the Spinaflex is triggered by electro-magnetic impulses and the potato is delivered. Available with 3 - 12 outlets.

