

NEWTEC NEWSLETTER

JUNE 2010



INSIDE THIS ISSUE:

- 1 Dear Newtec Customers and Dealers
- 2 Introducing the new 4015B2
- 3 Celox Adjustable Fragment Remover
- 4 Latest News: Web Services
- 5 Case: B.D. Nicol & Sons Australia (2012 GD + 3 Gillenkirch 7200E baggers)
- 6 Case: Poland: Steady 80+ portions per minute
- 7 News from Newtec Marketing:
 - Sine / Sheila
 - Ongoing Marketing Projects:
 - Celox carrot brochure
 - Price list
 - Website
- 8 Organizational changes in Newtec UK
Summer Holiday

Dear Newtec Customers and Dealers,

Since the New Year we at Newtec have seen an increasing order intake from all markets.

Your steady contact and interest in our products has resulted in this high activity level.

At Newtec we have increased our capacity to be able to keep a good delivery time and -performance.

We do hope that we in all markets see a continuous progress compared to 2009 and that the improved rolling revenue indicates a sustainable change in the business environment.

New Weigher

In November 2009 Newtec introduced the 4009B2 which already has been a success with several installations in Italy, Norway and Canada.

Newtec now introduces the next machine in the 40XX series. We are now ready to obtain orders from your customers for the 4015B2.

The first machine and PCS is designed for potatoes with a 2X2 CC L/R PCS.

The 4015B2 will over time replace the 3015 and will at the same time perform better and be more competitive in price.

Holiday

The Summer Holiday at Newtec is planned for a 3 weeks period (week 29th, 30th & 31st)

We wish you a nice and sunny summer.

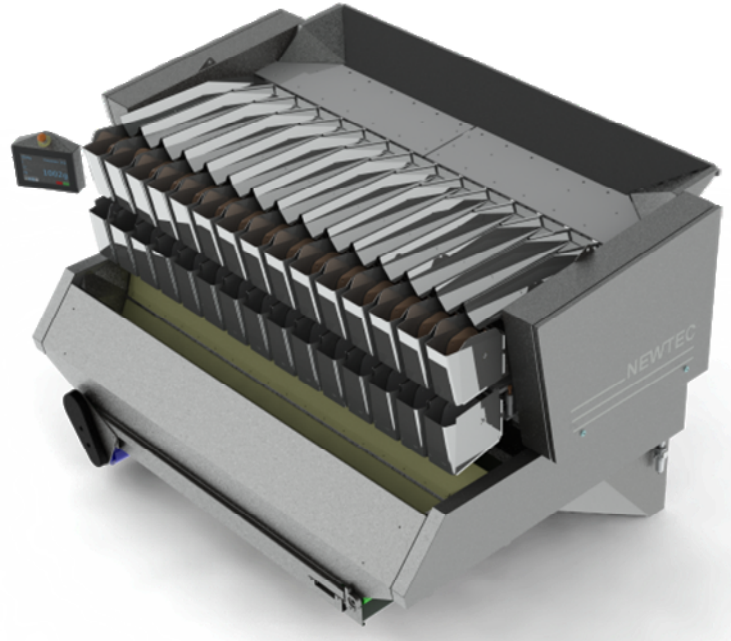
Yours sincerely
Henrik Winther Knudsen
CEO / Newtec A/S

Introducing the new 4015B2

The 4015B2 is a 15 head version of the 4009B2 design. In comparison with the 3015 the 4015B2 has several advantages. The infeed vibrators are of a new design. In combination with the VarioSpeed system, this makes the machine able to do optimum production under varying infeed conditions. The 4015B2 has the same unique NewTouch operator panel as the 4009B2 prepared for Web Services. The NewTouch takes the advantage of a touch panel, without making the basic operation complicated.

To get maximum performance, the control program of the machine has even more automatic adjustments than the 3015. The speed of the 4015B2 is comparable to the 3015, and because of the new improvement, the through-put will in average be higher on the 4015B2. If the speed is limited to the maximum speed of the baggers, the 4015B2 will use the lower cadence to improve the precision of the weighing accuracy.

The PCS for the 4015B2 has been improved to get smoother running and more reliable conveyers. The PCS for 4 of the centre collecting pans are ready for sale. You will soon receive a price list of the 4015B2, where current options are listed.



4015B2



4015B2 NewTouch

Celox Adjustable Fragment Remover



Celox Adjustable Fragment Remover

It began as a project for a customer with limited space. He wanted the Celox machine to grade his carrots, but could not find the space in his production line. It was then decided to take out his mechanical sizing equipment and let the Celox do the job – including the fragment sorting.

To increase the capacity, a moveable section in the middle of the infeed part of the machine was developed. This was to function as a product fragment remover, so all the small bits and pieces would not go through the camera section and occupy capacity.

The section can be electronically controlled from the touch panel. The customer can choose how much gap he wishes between the two vibrating sections, hence how large pieces/fragments he wants to sort out. The bits and pieces will then fall between the vibrating sections, and from there they slide down on a conveyor.

From 50 to 60 Hz

A nice little feature is that the fragment remover section runs at 60 hz. That changes the movement of the carrots in the vibrating chutes, and creates a nice smooth movement. The carrots clearly move much more equally in the chutes and when they arrive to the gap they either smoothly continue to the third vibrating section or if the size allows, they drop to the conveyor below.

This feature has now been delivered with three machines and is for the time being in order with another three.



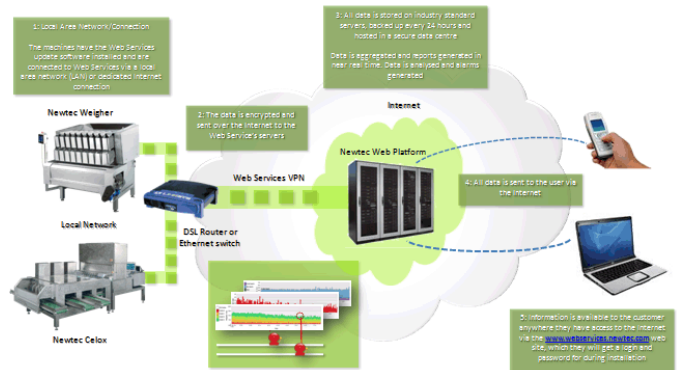
Latest News: Web Services

Web Services continues to evolve into a powerful production control and reporting system for Newtec Sorting and Weighing machines.

New features added in the latest release enhance the data selection capabilities and reports.

Web Services Statistics now includes:

- Financial reporting
- Efficiency reporting
- Time based reports for evaluating production / efficiency over a specified period



Revenue

Revenue / Outlet

Outlet	Volume (kg)	Revenue/kg (DKK)	Revenue (DKK)
Rejected	11,498.31	0.00	0.00
0-26mm	65,141.69	0.00	0.00
210-999	9,758.70	0.00	0.00
26-54mm	58,026.74	0.00	0.00
Outlet 4	63,314.97	0.00	0.00
Outlet 5	16,563.03	0.00	0.00
Outlet 6	13,287.55	0.00	0.00
Outlet 7	6,204.39	0.00	0.00
Outlet 8	14,828.99	0.00	0.00
Outlet 9	0.00	0.00	0.00
Outlet 10	3,811.54		
Outlet 11	42,610.19		
Total	305,046.09		

Costs

Material Costs

Delivered Volume	Volume (kg)	Cost/kg (DKK)	Total (DKK)
	0.00	0.00	0.00

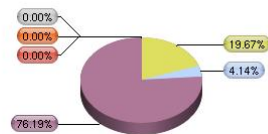
Cost/Outlet	Outlet	Volume (kg)	Cost/kg (DKK)	Total (DKK)
Rejected	11,498.31	0.00	0.00	
0-26mm	65,141.69	0.00	0.00	
210-999	9,758.70	0.00	0.00	
26-54mm	58,026.74	0.00	0.00	
Outlet 4	63,314.97	0.00	0.00	
Outlet 5	16,563.03	0.00	0.00	
Outlet 6	13,287.55	0.00	0.00	
Outlet 7	6,204.39	0.00	0.00	
Outlet 8	14,828.99	0.00	0.00	
Outlet 9	0.00	0.00	0.00	

Efficiency Information

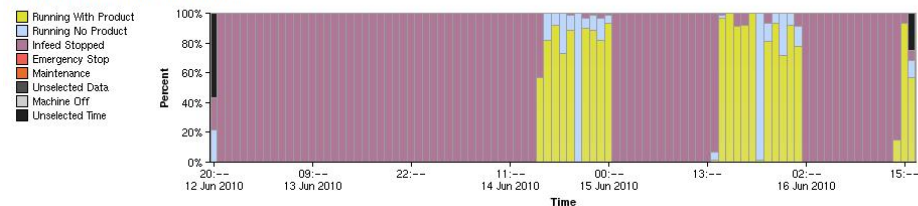
Name	Time	Actual Value	Percentage	Information
Total Period Time (min)	3d 21h 0min	5,580.00	100.00%	Calculation Start Time 12 Jun 2010, 20:00
Unselected Time (min)	1h 6min	65.98	1.18%	Calculation End Time 16 Jun 2010, 16:59
Unselected Data (min)	0min	0.00	0.00%	Number of Machines 1

Selected Time / Duration (min)	3d 19h 54min	5,514.02	98.82%
Machine On (min)	3d 19h 54min	5,513.93	98.82%
Running With Product (min)	18h 5min	1,084.70	19.44%
Machine Utilisation		82.39%	
Time Lost To Low Utilisation (min)	3h 11min	191.01	3.42%
Running No Product (min)	3h 48min	228.32	4.09%
Maintenance (min)	0min	0.00	0.00%
Infeed Stopped (min)	2d 22h 1min	4,200.92	75.29%
Emergency Stopped (min)	0min	0.00	0.00%
Machine Off (min)	0min	0.08	0.00%
Total Productive Time (min)	14h 54min	893.69	
Total Unproductive Time (min)	3d 5h 0min	4,620.33	
Efficiency During Period			16.21%

Breakdown For Selected Time / Duration



Information For Total Selected Time



Case: B.D. Nicol & Sons Australia (by David Proud)

Proud Solutions along with one of their oldest and most loyal customers decided in late 2007 to embark on a project to pack the maximum number of carrot pre packs from a single pre-pack line. David Proud and his staff had already installed 2 pre-pack lines on site using the NEWTEC 2012GD weighers along with 2 Gillenkirch 7200 E for the baggers.

After much discussion and evaluation the following was identified:

- NEWTEC TM30 with lift and pull perform best at 25 packs per min.
- NEWTEC CW5000 check weighers perform best at 25 packs per min.
- Gillenkirch 7200 E baggers perform best at 25 packs per min.
- NEWTEC 3015 Multi Head weigher could deliver in excess of 75 portions per minute.

The next stage was to design a layout suitable to enable 3 Gillenkirch baggers to be positioned under a single weigh head. This was achieved in the following manner.

- Firstly we drew the 3 baggers on the floor of the pack house in such a way as to allow enough spacing between each as to allow access for the operators to have control and space enough to pack their product into cartons and crates.
- Once we knew the distance required between we then drew the weigher into the picture to see how long the portion collecting system would have to travel.
- Naturally the solution for the centre bagger was easy however the 2 outer baggers were 1m past the ends of the weigher.
- It was decided to position a collecting pan at the ends of the standard cross conveyors and add a second cross conveyor on both sides of the weigher to feed into the Gillenkirch collecting pans.
- Finally to ensure a quick filling time to the Gillenkirch we added a second collecting pan at the end of these short conveyors.

Finally we past all of this information onto NEWTEC and the result for all parties concerned has been very rewarding and has delivered the following benefits to the customer.

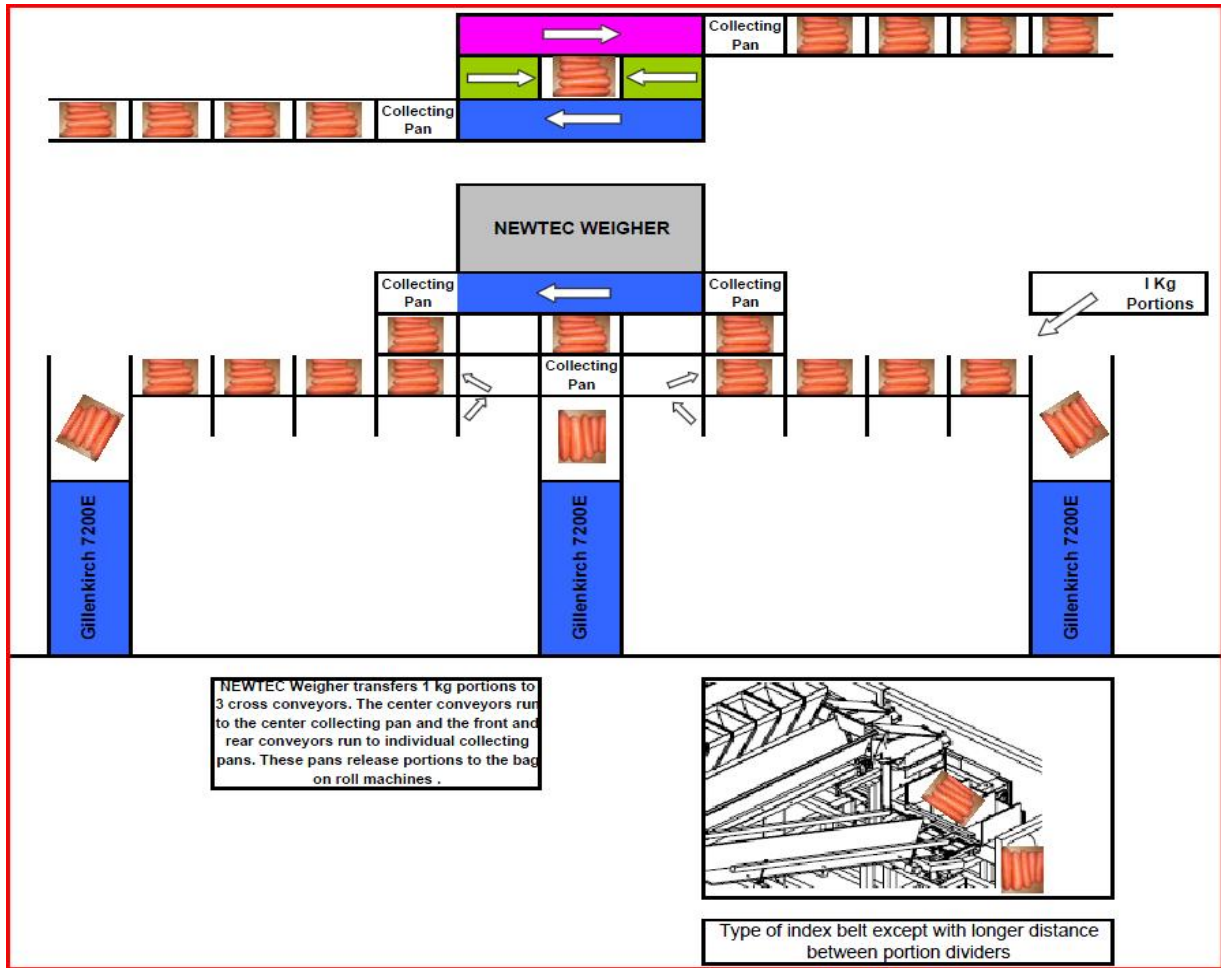
- Able to pack up to 75 bags per minute from one weigher.
- Only one in feed line required to handle 50% more production.
- Utilized the floor space with maximum return.
- Ease of access to the weigher, baggers and operator stations.

To view the weigher in action, click on the link below;

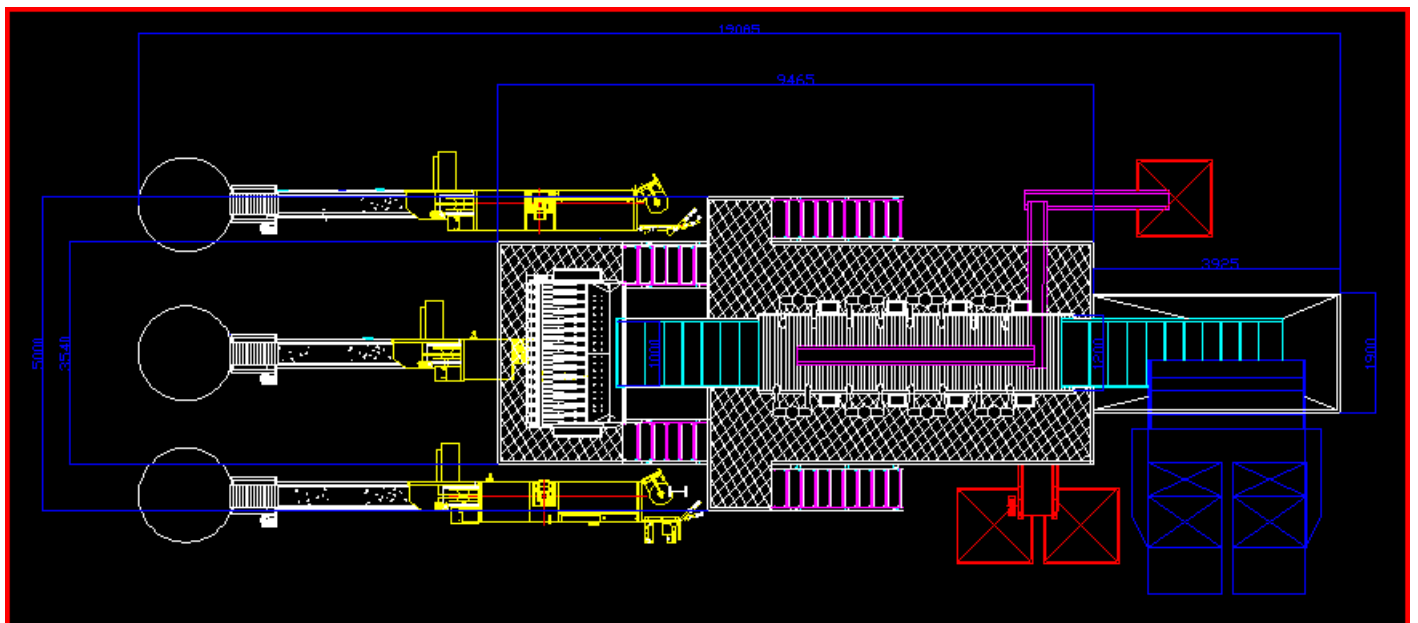
<http://www.youtube.com/watch?v=DI-42IS1WK0>



3015 with 3 x Gillenkirch
(carrots)



Drawing given to NEWTEC during the planning stage.



Final Layout of the Line

Organizational changes in Newtec UK

We are pleased to inform you that **Dean Chilvers** has been appointed **General Manager / Sales Manager** for Newtec Odense (UK) Ltd. as per June 14th 2010.

Ian Weatherstone is no longer employed by Newtec Odense (UK) Ltd.

We will in near future engage a salesperson who – together with Dean and the team at Newtec UK – can continue and further develop the British Market.

Summer Holiday:

Newtec will be closed in weeks 29, 30 and 31 (Monday 19th July – Friday 6th August 2010).

HAVE A WONDERFUL SUMMER!!!

